



**Description**

Delta PT is an 8mm studded Type C, Cavity Drainage Membrane that is suitable for use in basement waterproofing for new and existing structures.

Delta PT can also be used in above ground application to provide a damp proof barrier and to isolate plaster finishes from contamination.

Delta PT is a High-Density Polyethylene (HDPE) 8mm studded membrane with a heat welded polypropylene mesh.

Delta PT is suitable as an impermeable damp proofing base for plaster or shotcrete (with suitable reinforcement) and as a water control and drainage membrane in tunnel construction or for remedial damp proofing and waterproofing of existing basements internally.

**Features**

- 8mm studded profile
- BBA Approved
- Drainage capacity 5 L/s m<sup>2</sup>
- Compressive Strength: 70 KN/m<sup>2</sup>
- An effective barrier to the transmission of salts, liquid water and water vapour
- A "reversible" system, which will minimise damage to historical or heritage structures
- Resistant to chemicals, root penetration, rotproof, neutral towards drinking water

**Durability**

Subject to normal conditions, Delta PT will provide an effective barrier to the transmission of water, water vapour and salts, for the life cycle of the structure.

**Packaging**

Supplied in 1m x 20m and 2m x 20m rolls

**Product Details**

DMS 001 (1.5m x 10m)  
DMS 002 (2m x 20m)

**Technical Data**

Delta PT	
DMS	001/002
Material	High Density Polyethylene (HDPE)
Sheet Thickness	0.5mm
Drainage Capacity	5 L/s m <sup>2</sup>
Stud Height	8mm (overall sheet depth 8mm)
Roll Size	1.5m x 10m 2m x 20m
Compressive Strength	70 KN/m <sup>2</sup>
Temperature Resistance	-30°C to +80°C
Reaction to Fire	EN13501-1 Class E
R Value	Theoretical value based on a supposed specific thermal conductivity of HPDE 0.42 W/m x K, the R value would be 0.001
Sd-Value	236.4 m
Thickness	0.000921 m
U-Value	256.678
Vapour Resistivity	1283.388 MNs/gm



### Fields of Application

- Suitable for damp proofing and waterproofing
- Suitable for Flood Resilience (PFR)
- Can support plastering, rendering or a dry lining fixed by plaster dabs (where appropriate)
- As a waterproofing membrane in areas subject to vibration
- An effective barrier to the transmission of salts, liquid water and water vapour
- A "reversible" system, which will minimise damage to historical or heritage structures

### Specification

- BS 8102:2022 Protection of below ground structures against water ingress. Code of practice.
- J40/290 High-density polyethylene/ polypropylene studded cavity drain membrane
- J40/47 High-density polyethylene/ polypropylene studded cavity drain membrane
- Classification Pr\_25\_57\_51\_74

### Associated Products

- Delta PT Plugs
- Delta Flexi Dri Plus Plugs
- Delta Ultra Fix Plugs
- Delta Cornerstrip
- Delta Sealing Tape
- PT Profile Strip

### Safety

Always follow the instructions provided in the material safety data sheet and take the precaution described there. Wear appropriate Protective Personal Equipment (PPE) when applying and using the material. Observe all governmental, state, and local safety regulations when processing the material.

### Installation

Please refer to the Delta Type C Installation Guide. Installation Guides can be found at [www.deltamembranes.com/technical/delta-installation-guides/](http://www.deltamembranes.com/technical/delta-installation-guides/). We have a number of "How to" subject related video guides available on your Youtube Channel and Website. Please visit [www.deltamembranes.com/technical-categories/the-video-suite/](http://www.deltamembranes.com/technical-categories/the-video-suite/).

### Storage

- Delta PT is UV Stable
- Store safely and keep out of reach of children
- Always store and transport in a secure upright position

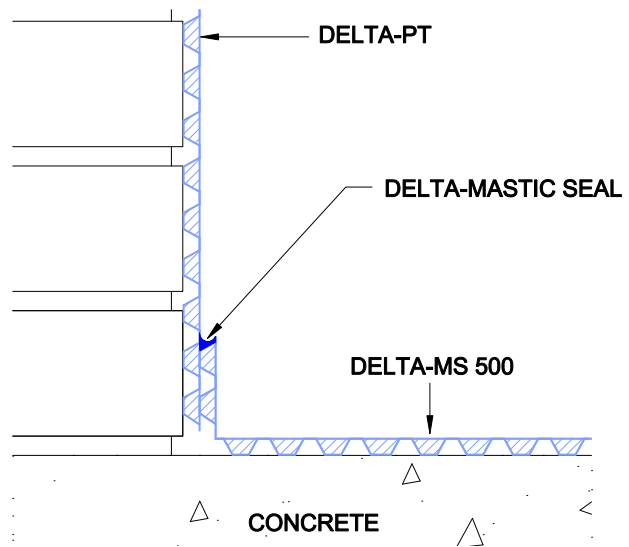
### Other Information

All data and information contained in these Product/Technical Data Sheets is up-to-date and correct as at the date of issue. The information given is suggested as guidance and should only be used for evaluating your specific application. Delta Membrane Systems Limited cannot control or anticipate the conditions under which this product may be used, each user should review the information in specific context of the planned use. The information contained in these Product/Technical Data Sheets should not be considered a warranty, expressed, or implied, including but not limited to a warranty of merchantability or fitness for a particular purpose. In no event shall Delta Membrane Systems Limited be liable for any incidental or consequential damages resulting from the use, misuse, or inability to use the product. This exclusion applies regardless of whether such damages are sought based on breach of warranty, breach of contract, negligence, strict liability in tort, or any other legal theory. When in doubt, contact Delta's Technical Team on 01992 523 523.

### Guarantees

Delta Membrane Systems Limited offer a 30-year Product Guarantee on membranes, seals and fixings when a Delta Cavity Drain System has been installed by a Delta Registered Installer. A list of experienced Delta Registered Installers is available from Delta's offices.

### Technical Drawings - DW-108-1-(F)



### Technical Drawings - DW-149-1-(C)

