



Description

Delta MS 20 is an 20mm studded Type C, Cavity Drainage Membrane that is suitable for use on internal faces, floors or where a higher drainage capacity is required.

This High-Density Polyethylene (HDPE) cavity drainage membrane has an 20mm studded brown profile creating a large 10 litre per square meter void, ideal for high levels of water management. With its higher drainage capacity and compressive strength, this waterproof and vapour proof membrane can be used as part of a Type C waterproofing solution in accordance with BS 8102:2022 for the protection of below ground structures against the potentially adverse effects of ground water ingress.

Delta MS 20 provides an effective barrier to the transmission of salts and other contaminants.

Delta MS 20 is also suitable for tunnels, civil construction and for large commercial projects.

Please follow manufacturer’s instructions for installation.

Features

- 20mm studded profile suitable for higher volumes of water penetration
- BBA Approved
- Compressive Strength: >150 kN/m²
- Drainage capacity: 10 L/S m²
- BS 8102:2022 Type C Waterproofing Protection
- Suitable for Waterproofing and damp proofing
- Suitable for flood resilience (PFR)
- Resistant to chemicals, root penetration, rot proof

Durability

Subject to normal conditions, Delta MS 20 will provide an effective barrier to the transmission of water and water vapour for the life cycle of the structure.

Packaging

Supplied in 2m x 20m rolls

Product Details

DMS 009

Technical Data

Delta MS 20	
DMS	009
Material	High Density Polyethylene (HDPE)
Sheet Thickness	1mm
Stud Height	20mm
Roll Size	2m x 20m
Compressive Strength	150 kN/m ²
Drainage Capacity	10 L/s m 600 L/min m 36 100 L/h m
Air Volume Between Studs	14 L/m ²
Temperature Resistance	-30°C to +80°C
Reaction to Fire	EN13501-1 Class E
R Value	0.18 M ² K/W



Fields of Application

- Used in new and retrofit projects
- Can support dry lining, screed or flooring
- A reversible system which will minimize damage to historical or heritage structures
- Can be used as a 'cavity former' for many types of new construction
- Storage or plant rooms
- Tunnels and Civil Infrastructure
- Car Parks

Specification

- BS 8102:2022 Protection of below ground structures against water ingress. Code of practice.
- J40/290 High-density polyethylene/polypropylene studded cavity drain membrane
- J40/47 High-density polyethylene/polypropylene studded cavity drain membrane
- Classification Pr_25_57_51_74

Associated Products

- Delta Cornerstrip
- Delta Sealing Tape
- Delta Basement Drainage Systems
- Delta MS 500
- Delta PT

Installation

Please refer to the Delta Type C Installation Guide. Installation Guides can be found at www.deltamembranes.com/technical/delta-installation-guides/. We have a number of "How to" subject related video guides available on your Youtube Channel and Website. Please visit www.deltamembranes.com/technical/categories/the-video-suite/.

Storage

- Delta MS 20 is UV Stable
- Store safely and keep out of reach of children
- Always store and transport in a secure upright position

Guarantees

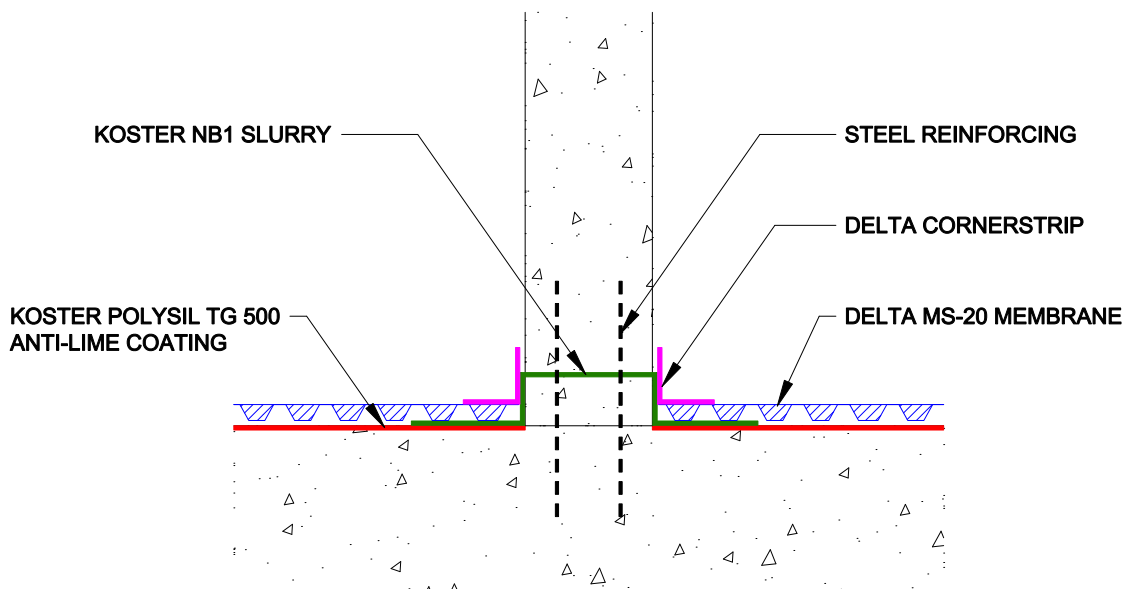
Delta Membrane Systems Limited offer a 30-year Product Guarantee on membranes, seals and fixings when a Delta Cavity Drain System has been installed by a Delta Registered Installer. A list of experienced Delta Registered Installers is available from Delta's offices.

Safety

Always follow the instructions provided in the material safety data sheet and take the precaution described there. Wear appropriate Protective Personal Equipment (PPE) when applying and using the material. Observe all governmental, state, and local safety regulations when processing the material.

Technical Drawing - DW-167-1-(C)

STRUCTURAL INTERNAL WALL CAPILLARY BREAK



Other Information

All data and information contained in these Product/Technical Data Sheets is up-to-date and correct as at the date of issue. The information given is suggested as guidance and should only be used for evaluating your specific application. Delta Membrane Systems Limited cannot control or anticipate the conditions under which this product may be used, each user should review the information in specific context of the planned use. The information contained in these Product/Technical Data Sheets should not be considered a warranty, expressed, or implied, including but not limited to a warranty of merchantability or fitness for a particular purpose. In no event shall Delta Membrane Systems Limited be liable for any incidental or consequential damages resulting from the use, misuse, or inability to use the product. This exclusion applies regardless of whether such damages are sought based on breach of warranty, breach of contract, negligence, strict liability in tort, or any other legal theory. When in doubt, contact Delta's Technical Team on 01992 523 523.