

Description

Delta FM is a Virgin High-Performance PE-VHD. Specifically designed for floor applications to combat capillary dampness and contamination. The low stud profile (4 mm) minimises the impact upon existing floor levels but still provides an air gap to achieve damp pressure equalisation. The special low profile offered by Delta FM is excellent for detailing existing staircases and tight spaces. Delta FM can be linked to other Delta Type C, cavity drainage membranes.

A fast-track application which allows for various floor finishes to be achieved with zero 'down time'.

Delta FM can be used in new build, remedial or refurbishment projects.

Features

- 4mm studded profile
- Suitable for use on damp proofing walls, floors, and vaulting ceilings
- Compressive Strength: 700 kN/m²
- Fast track installation
- Durable, puncture and impact resistant
- Resistance to water, water vapour & salt transfer
- Suitable for floors

Durability

Subject to normal conditions, Delta FM will provide an effective barrier to the transmission of moisture for the life cycle of the structure.

Packaging

Supplied in 2m x 20m rolls

Product Details

DMS 023

Technical Data

Delta FM	
DMS	023
Material	Virgin high-performance PE-VHD
Material Application	Special low stud profile for floor. Can be used on walls.
Sheet Thickness	0.6mm
Stud Height	4mm
Roll Size	2m x 20m
Compressive Strength	700 kN/m ²
Air Volume Between Studs	2.6 l/m ²
Temperature Resistance	-30°C to +80°C
Reaction to Fire	EN13501-1 Class E

Associated Products

- Delta Cornerstrip
- Delta Sealing Tape
- Delta Perimeter Drainage Channel
- Delta Basement Drainage Systems
- Delta MS 500



Fields of Application

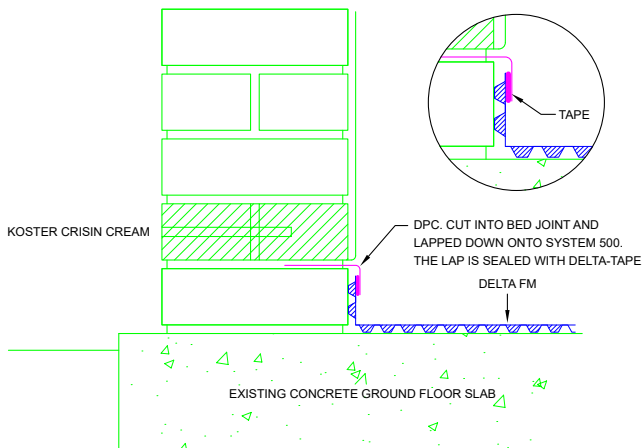
- Used in new build construction and retrofit projects
- As protection for high quality floor finishes such as hardwood
- As protection for floor finishes such as screeds
- Air gap damp proofing membrane
- Creates a continuous air gap in substrates
- Damp pressure equalisation and ventilation
- Zero "down time" in fast track installation
- Excellent for detailing existing staircases and tight spaces
- Can be linked to other Delta Type C Membranes

Specification

- BS 8102:2022 Protection of below ground structures against water ingress. Code of practice.
- J40/290 High-density polyethylene/ polypropylene studded cavity drain membrane
- J40/47 High-density polyethylene/ polypropylene studded cavity drain membrane
- Classification Pr_25_57_51_74

Technical Drawing - DDP-106-1 (FM)

DELTA FM FLOOR APPLICATION SEALED AT DPC. LEVEL.
THE DPC. CAN BE A CHEMICAL DPC. (AS SHOWN) OR A
PHYSICAL DPC. CAN BE CUT AND SEALED TO DELTA FM



Installation

Please refer to the Delta Type C Installation Guide. Installation Guides can be found at www.deltamembranes.com/technical/delta-installation-guides/. We have a number of "How to" subject related video guides available on your Youtube Channel and Website. Please visit www.deltamembranes.com/technical-categories/the-video-suite/.

Storage

- Store safely and keep out of reach of children
- Always store and transport in a secure upright position

Guarantees

Delta Membrane Systems Limited offer a 30-year Product Guarantee on membranes, seals and fixings when a Delta Cavity Drain System has been installed by a Delta Registered Installer. A list of experienced Delta Registered Installers is available from Delta's offices.

Safety

Always follow the instructions provided in the material safety data sheet and take the precaution described there. Wear appropriate Protective Personal Equipment (PPE) when applying and using the material. Observe all governmental, state, and local safety regulations when processing the material.

Other Information

All data and information contained in these Product/Technical Data Sheets is up-to-date and correct as at the date of issue. The information given is suggested as guidance and should only be used for evaluating your specific application. Delta Membrane Systems Limited cannot control or anticipate the conditions under which this product may be used, each user should review the information in specific context of the planned use. The information contained in these Product/Technical Data Sheets should not be considered a warranty, expressed, or implied, including but not limited to a warranty of merchantability or fitness for a particular purpose. In no event shall Delta Membrane Systems Limited be liable for any incidental or consequential damages resulting from the use, misuse, or inability to use the product. This exclusion applies regardless of whether such damages are sought based on breach of warranty, breach of contract, negligence, strict liability in tort, or any other legal theory. When in doubt, contact Delta's Technical Team on 01992 523 523.